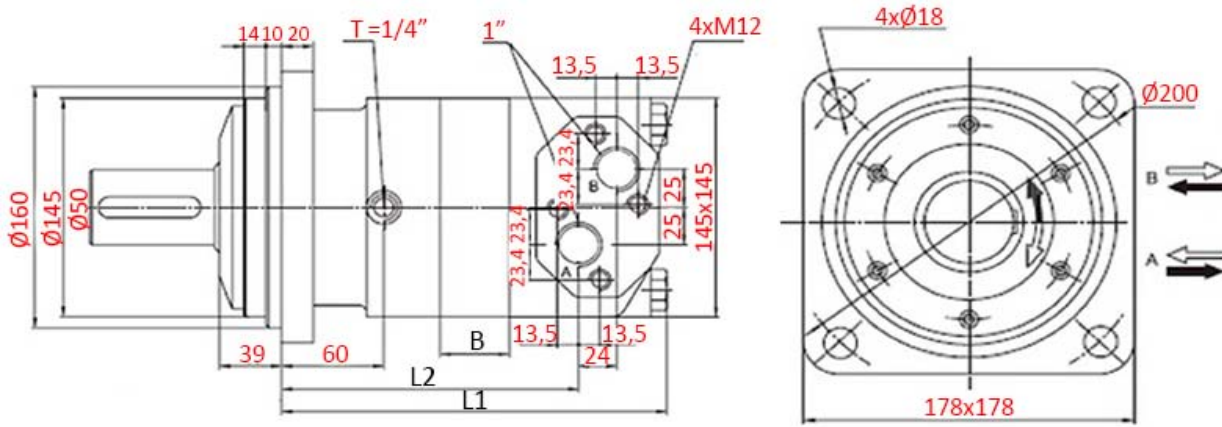
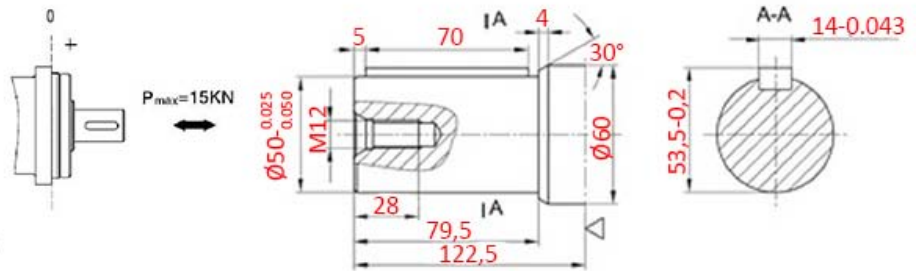
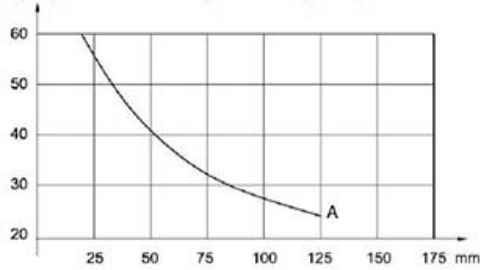


[mm]



P(kN)CENTRIPETALNA (RADIALNA) SILA / Radial force



Šifra / Code	OBREMENITEV / Load	13773 - MV315	13774 - MV400	13762 - MV500	13452 - MV630	13678 - MV800
cm3/vratljaj / cm3/rev		315	400	500	630	800
Max. Vrtljaji / Max. RPM [vrt/min]		630	500	400	315	250
Max. Navor / Max. Torque [daNm]	konstantna / cont.	87,3	110,8	138,5	157	177,4
Max. Tlak / Max. Pressure [bar]	konstantna / cont. Konica / peak	200 280	200 280	200 280	180 240	160 210
Max. Moč / Max. Power [kW]	konstantna / cont.	32	40			35
Max. Pretok / Max. Flow [l/min]		200				
Dolžina osovine / Shaft length [mm]		79,5				
Premer osovine / Dia. Shaft [mm]		50				
L1 [mm]		214	221	229	239	253
L2 [mm]		165	170	177	184	195
B [mm]		19	26	34	44	58
Priključni navoj / Thread ["]		1"				
Lekaža "T" / Drain "T" ["]		1/4"				

## HIDROMOTOR MV315

### TLAK / Pressure (bar)

PRETOK / Flow (lit/min)

	35	70	100	140	180	200	240
10	132 <b>28</b>	278 <b>25</b>	416 <b>24</b>	576 <b>23</b>	701 <b>21</b>	799 <b>18</b>	945 <b>15</b>
20	145 <b>58</b>	297 <b>57</b>	440 <b>56</b>	601 <b>55</b>	744 <b>54</b>	846 <b>51</b>	1011 <b>47</b>
50	141 <b>153</b>	295 <b>152</b>	439 <b>150</b>	618 <b>148</b>	770 <b>145</b>	884 <b>141</b>	1051 <b>134</b>
75	135 <b>233</b>	287 <b>231</b>	433 <b>228</b>	607 <b>223</b>	771 <b>219</b>	888 <b>214</b>	1057 <b>206</b>
100	129 <b>311</b>	281 <b>309</b>	427 <b>307</b>	601 <b>304</b>	765 <b>299</b>	885 <b>294</b>	1047 <b>286</b>
125	116 <b>389</b>	270 <b>387</b>	418 <b>385</b>	592 <b>382</b>	755 <b>378</b>	870 <b>372</b>	1033 <b>365</b>
150	108 <b>471</b>	260 <b>469</b>	411 <b>467</b>	581 <b>462</b>	745 <b>455</b>	856 <b>447</b>	1019 <b>434</b>
160	101 <b>503</b>	253 <b>501</b>	406 <b>497</b>	575 <b>493</b>	737 <b>487</b>	846 <b>478</b>	1011 <b>465</b>
200	77 <b>631</b>	235 <b>629</b>	389 <b>624</b>	560 <b>618</b>	716 <b>610</b>	823 <b>598</b>	989 <b>576</b>

MAX. KONSTANTEN /  
Max. Continuous

MAX. OBČASEN /  
Max. Intermittent

295 – NAVOR / Torque (Nm)

152 – HITROST / Speed (rpm)

## HIDROMOTOR MV400

### TLAK / Pressure (bar)

PRETOK / Flow (lit/min)

	35	70	100	140	180	200	240
10	175 <b>21</b>	367 <b>21</b>	542 <b>20</b>	740 <b>19</b>	923 <b>18</b>	1050 <b>17</b>	1233 <b>15</b>
20	187 <b>46</b>	380 <b>46</b>	563 <b>45</b>	778 <b>44</b>	964 <b>42</b>	1099 <b>41</b>	1284 <b>39</b>
50	191 <b>119</b>	384 <b>118</b>	575 <b>118</b>	803 <b>117</b>	992 <b>115</b>	1131 <b>113</b>	1364 <b>108</b>
75	186 <b>183</b>	376 <b>181</b>	569 <b>178</b>	799 <b>174</b>	995 <b>171</b>	1133 <b>165</b>	1366 <b>159</b>
100	164 <b>247</b>	367 <b>246</b>	566 <b>244</b>	789 <b>242</b>	988 <b>238</b>	1130 <b>234</b>	1359 <b>225</b>
125	159 <b>310</b>	357 <b>308</b>	556 <b>305</b>	778 <b>302</b>	974 <b>296</b>	1123 <b>288</b>	1348 <b>281</b>
150	151 <b>372</b>	344 <b>371</b>	533 <b>369</b>	764 <b>366</b>	962 <b>361</b>	1111 <b>351</b>	1326 <b>340</b>
175	136 <b>436</b>	330 <b>434</b>	528 <b>431</b>	748 <b>427</b>	944 <b>422</b>	1092 <b>415</b>	1314 <b>407</b>
200	113 <b>498</b>	316 <b>496</b>	511 <b>492</b>	735 <b>485</b>	924 <b>477</b>	1076 <b>470</b>	1294 <b>460</b>

MAX. KONSTANTEN /  
Max. Continuous

MAX. OBČASEN /  
Max. Intermittent

295 – NAVOR / Torque (Nm)

152 – HITROST / Speed (rpm)

## HIDROMOTOR MV500

### TLAK / Pressure (bar)

PRETOK / Flow (lit/min)

	35	70	100	140	180	200	240
10	232 <b>18</b>	448 <b>18</b>	667 <b>17</b>	919 <b>17</b>	1140 <b>16</b>	1296 <b>14</b>	1540 <b>11</b>
20	235 <b>38</b>	480 <b>37</b>	707 <b>37</b>	961 <b>35</b>	1180 <b>34</b>	1335 <b>33</b>	1588 <b>30</b>
50	230 <b>97</b>	479 <b>96</b>	726 <b>95</b>	982 <b>94</b>	1217 <b>92</b>	1388 <b>89</b>	1670 <b>84</b>
75	223 <b>146</b>	477 <b>145</b>	720 <b>143</b>	987 <b>141</b>	1234 <b>138</b>	1413 <b>133</b>	1692 <b>125</b>
100	218 <b>197</b>	470 <b>195</b>	717 <b>193</b>	983 <b>190</b>	1235 <b>186</b>	1410 <b>181</b>	1686 <b>173</b>
125	211 <b>247</b>	463 <b>246</b>	711 <b>244</b>	971 <b>241</b>	1226 <b>237</b>	1399 <b>233</b>	1672 <b>225</b>
150	193 <b>300</b>	445 <b>299</b>	693 <b>296</b>	966 <b>293</b>	1198 <b>288</b>	1369 <b>282</b>	1663 <b>271</b>
175	174 <b>350</b>	427 <b>349</b>	681 <b>347</b>	955 <b>343</b>	1186 <b>339</b>	1347 <b>334</b>	1643 <b>324</b>
200	154 <b>401</b>	405 <b>400</b>	648 <b>398</b>	933 <b>395</b>	1167 <b>390</b>	1327 <b>382</b>	1626 <b>370</b>

MAX. KONSTANTEN /  
Max. Continuous

MAX. OBČASEN /  
Max. Intermittent

**295** – NAVOR / Torque (Nm)

**152** – HITROST / Speed (rpm)

## HIDROMOTOR MV630

### TLAK / Pressure (bar)

PRETOK / Flow (lit/min)

	35	60	90	120	150	180	210
10	260 <b>15</b>	484 <b>14</b>	753 <b>14</b>	1020 <b>13</b>	1175 <b>13</b>	1436 <b>12</b>	1654 <b>11</b>
20	267 <b>30</b>	512 <b>30</b>	778 <b>29</b>	1021 <b>29</b>	1219 <b>28</b>	1490 <b>26</b>	1728 <b>24</b>
50	268 <b>78</b>	514 <b>78</b>	805 <b>77</b>	1054 <b>74</b>	1264 <b>73</b>	1559 <b>71</b>	1813 <b>67</b>
75	250 <b>118</b>	508 <b>117</b>	800 <b>114</b>	1038 <b>112</b>	1253 <b>110</b>	1557 <b>107</b>	1821 <b>101</b>
100	245 <b>157</b>	499 <b>156</b>	794 <b>154</b>	1013 <b>152</b>	1251 <b>149</b>	1552 <b>146</b>	1822 <b>140</b>
125	233 <b>198</b>	478 <b>197</b>	776 <b>195</b>	993 <b>193</b>	1238 <b>191</b>	1538 <b>187</b>	1808 <b>181</b>
150	222 <b>238</b>	459 <b>237</b>	757 <b>236</b>	985 <b>234</b>	1233 <b>232</b>	1530 <b>229</b>	1787 <b>221</b>
175	195 <b>279</b>	450 <b>278</b>	738 <b>277</b>	975 <b>274</b>	1205 <b>270</b>	1517 <b>265</b>	1769 <b>260</b>
200	169 <b>320</b>	435 <b>320</b>	696 <b>318</b>	944 <b>316</b>	1187 <b>313</b>	1493 <b>306</b>	1746 <b>294</b>

MAX. KONSTANTEN /  
Max. Continuous

MAX. OBČASEN /  
Max. Intermittent

**295** – NAVOR / Torque (Nm)

**152** – HITROST / Speed (rpm)

## HIDROMOTOR MV800

### TLAK / Pressure (bar)

PRETOK / Flow (lit/min)

	25	50	80	100	130	160	180
10	273 <b>11</b>	555 <b>10</b>	816 <b>10</b>	1076 <b>9</b>	1381 <b>8</b>	1683 <b>8</b>	1882 <b>7</b>
20	277 <b>23</b>	561 <b>22</b>	831 <b>22</b>	1130 <b>21</b>	1431 <b>20</b>	1753 <b>18</b>	1960 <b>16</b>
50	283 <b>61</b>	572 <b>60</b>	841 <b>58</b>	1142 <b>57</b>	1438 <b>55</b>	1760 <b>53</b>	1967 <b>49</b>
75	264 <b>93</b>	570 <b>92</b>	840 <b>91</b>	1145 <b>89</b>	1440 <b>85</b>	1756 <b>82</b>	1962 <b>78</b>
100	247 <b>124</b>	556 <b>123</b>	826 <b>122</b>	1121 <b>120</b>	1423 <b>117</b>	1737 <b>113</b>	1951 <b>107</b>
125	238 <b>156</b>	526 <b>155</b>	810 <b>153</b>	1099 <b>150</b>	1403 <b>145</b>	1709 <b>141</b>	1942 <b>135</b>
150	232 <b>188</b>	517 <b>186</b>	794 <b>184</b>	1083 <b>181</b>	1377 <b>177</b>	1685 <b>172</b>	1926 <b>166</b>
175	211 <b>251</b>	495 <b>249</b>	780 <b>247</b>	1061 <b>244</b>	1354 <b>241</b>	1669 <b>236</b>	1903 <b>229</b>
200	194 <b>302</b>	460 <b>301</b>	752 <b>300</b>	1045 <b>298</b>	1339 <b>293</b>	1652 <b>288</b>	1807 <b>282</b>

MAX. KONSTANTEN /  
Max. Continuous

MAX. OBČASEN /  
Max. Intermittent

**295** – NAVOR / Torque (Nm)

**152** – HITROST / Speed (rpm)